

2068 S River Rd

Kelso, WA 98626

Priced At

\$865,000

The Retreat at Rivers Edge

The Sage Floor Plan

- 2,353
Square Feet
- 4-5
Bedrooms
- 2.5 - 3
Bathrooms
- 2-3
Car Garage



Classic architectural features and a primary on the main layout are hallmarks of the stunning Sage plan. At 2,272 square feet with three to four bedrooms and two and a half baths, this contemporary two-story floor home lives large and caters to today's lifestyles.

Enjoy immediate curb appeal with four lovely elevations from which to choose, each distinctive and full of character. A gracious covered front porch welcomes you home and makes for a comfortable perch to connect with neighbors and watch the kids play. Architectural window awnings, along with the covered porch, increase the home's energy efficiency and keep interiors cooler in the warmer months.

The Sage opens to a dedicated entryway with a coat closet and powder room situated apart from the first-floor living areas. Interior detailing, including coffered ceilings, creates lovely character and a welcoming sense of arrival. Purposeful design elements throughout ensure no wasted space in this beautiful and inviting floor plan. A generously sized den just off the entryway expands common living areas benefitting families continuing to spend more time at home. With access to the great room beyond, transform the space into an extended lounge space, media room, home office, or kids' study room. Garage entry is also just off the light-filled hallway, with an optional three-car garage or shop available for even more storage and workspace.

A short walk down the hallway opens to a contemporary open-concept design that keeps families connected throughout the downstairs areas of the home. Refine your PrimaryChef skills in the gourmet kitchen and catch up with loved ones seated in the great room. The dining area, also just off the kitchen can be as informal or formal as you desire, and keeps family and guests nearby during meal prep.

The well-appointed kitchen features good flow and is beautifully functional to accommodate a crowd. The center island with double basin sink offers space for bar stool seating for more informal meals, and a walk-in pantry keeps groceries and ingredients organized. A covered patio off the dining area creates opportunities for seamless indoor-outdoor living all year long, and an optional porch extension offers even more space for comfortable al fresco dining.

A primary on the main floor plan appeals to families throughout many life stages and is suited for those who appreciate the ease of single-level living. Situated downstairs and away from the secondary bedrooms above, the primary suite offers a quieter space for relaxation and privacy. An ensuite bath offers plenty of room to get ready for the day or unwind with a dual sink vanity, ample counter space, and spacious walk-in closet.

On the second floor, two well-sized bedrooms share a large full bath. A roomy loft allows easy lounging upstairs and could be enjoyed as a cozy second family room, study space, or teen room. With the loft option, both secondary bedrooms benefit from no shared walls.

As with all Pacific Lifestyle homes, the Sage comes equipped with an assortment of smart home features so your living experience is as convenient and comfortable as possible. A smart thermostat, touchscreen panel, Amazon Echo devices, smart locks, and sensors are all included so you may manage many aspects of your home's performance right at your fingertips. The Sage is also a blank canvas on which to create interiors to your specific style and preferences. In addition to the many pre-construction options listed below, your personalization selections are practically limitless. During a private appointment at our Design Studio, one of the largest in the Pacific Northwest, you will have the opportunity to choose color palettes, flooring, cabinets, counters, and every last detail that makes a house a home, and our experienced design team will help guide you every step of the way.

Pre-construction options for Sage include:

- Double door at Den
- Gas fireplace in Great Room
- Extended island in Kitchen
- Double oven in Kitchen
- Barn door in Primary Bedroom
- Bedroom with walk-in closet at Loft
- Sink in Laundry Room
- Three-car Garage
- Workshop at Garage

With its thoughtful floor plan design and architectural features, the Sage is the ideal balance of function and style.



Contact Us

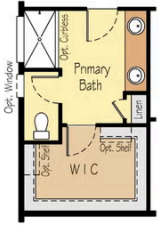
Phone: 866-257-0820

2068 S River Rd

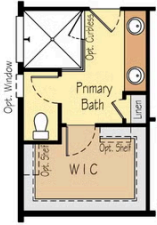
Kelso, WA 98626

The Sage Floor Plan

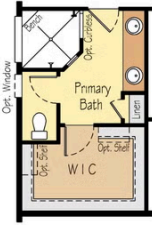
2353 Sage



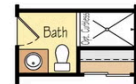
Optional Full Tiled Shower



Optional Large Custom Glass Shower



Optional Large Custom Tiled Shower



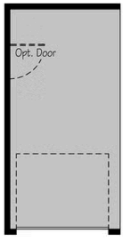
Optional Full Bath 3
(In Lieu Of Powder)



Optional Bedroom 5



Optional 5x20' Shop



Optional 10x20' 3rd Garage



Optional 10x30' 3rd Garage

