

Homesite 2 S Brunner Rd

Newberg, OR 97132

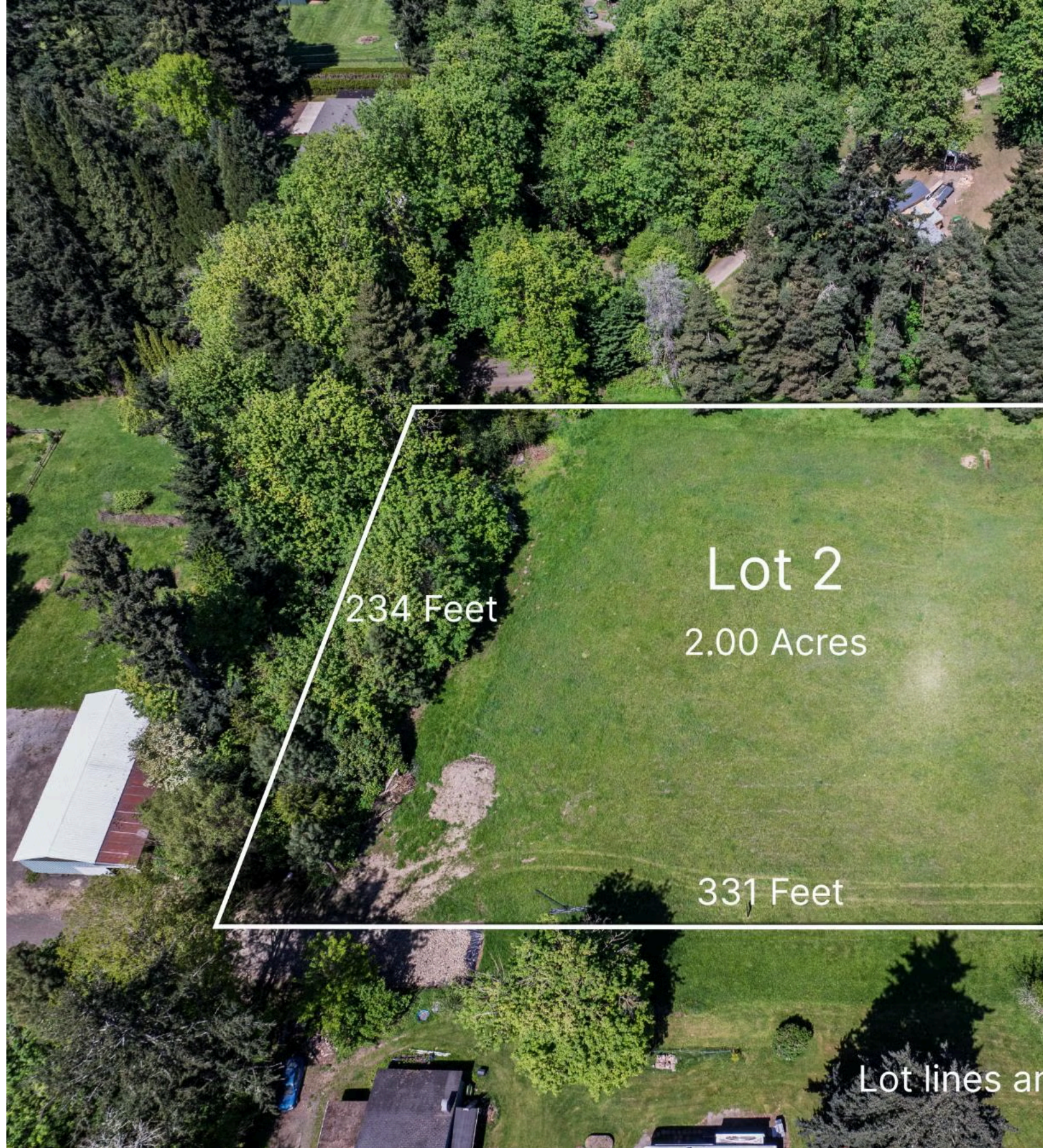
Priced At

\$1,445,000

Available Lots - Portland Metro

The Shasta XL Floor Plan

- 3437
Square Feet
- 3
Bedrooms
- 2.5
Bathrooms
- 3
Car Garage



234 Feet

Lot 2

2.00 Acres

331 Feet

Lot lines are

Now Selling!

This 2-acre homesite on Brunner Road in Oregon City offers an exceptional opportunity to build your dream home in a private, nature-filled setting. Surrounded by beautiful Pacific Northwest greenery, the property provides ample space, privacy, and flexibility for a wide range of home designs and outdoor features. A private shared drive runs along the southern edge of the parcels, providing convenient access while maintaining the homesite's sense of seclusion. Located within the Oregon City School District and just minutes from shopping, dining, groceries, and everyday amenities, this homesite delivers the ideal balance of peaceful acreage living and modern convenience.

The property is currently paired with the Shasta XL home plan to showcase its potential, while still offering the flexibility to choose from a variety of thoughtfully designed home plans to fit your lifestyle.

The Shasta XL home plan is an expansive and thoughtfully designed primary-on-the-main layout offering 3,437 square feet of living space, with 3 to 5 bedrooms and 2.5 to 4 bathrooms. Combining the ease of main-level living with the added flexibility of an upper-level retreat, the Shasta XL is ideal for those seeking both comfort and versatility.

A welcoming front porch sets the tone as you enter into a spacious foyer, where a beautiful formal dining room sits on one side and a large den on the other—perfect for a home office, study, or flex space. The den can also be converted into a bedroom with a full bathroom, offering additional functionality for guests or multi-generational living. The dining room connects to the main living area through an included butler's pantry, adding both convenience and style.

The home opens into a stunning great room with 12-foot ceilings and large windows that bring in abundant natural light. An optional 12-foot sliding glass door enhances the indoor-outdoor connection, making it easy to access the patio. Just off the great room, you'll find a convenient powder room and the luxurious primary suite, which is thoughtfully positioned for privacy. The suite features ample natural light and an optional sliding glass door to the backyard. The primary bath includes a walk-in shower, soaking tub, and a spacious walk-in closet, with additional options for a fully tiled shower, custom tile shower, or large glass shower for a spa-inspired experience.

The great room flows seamlessly into a chef's kitchen complete with a large island, generous counter space, a walk-in pantry, and an adjoining dining nook, creating the perfect space for entertaining and everyday living. Down the hall, you'll find a well-appointed laundry room with access to the 3-car garage, along with two additional guest bedrooms and a full bathroom, forming a private wing of the home.

Upstairs, the included bonus room provides even more flexibility, ideal for a game room, media room, or additional living space. This level also features an additional bedroom and full bathroom, making it a perfect private guest suite or retreat.

With its spacious layout, elevated ceilings, and flexible living options, the Shasta XL delivers a seamless blend of luxury, comfort, and adaptability for modern living.
None